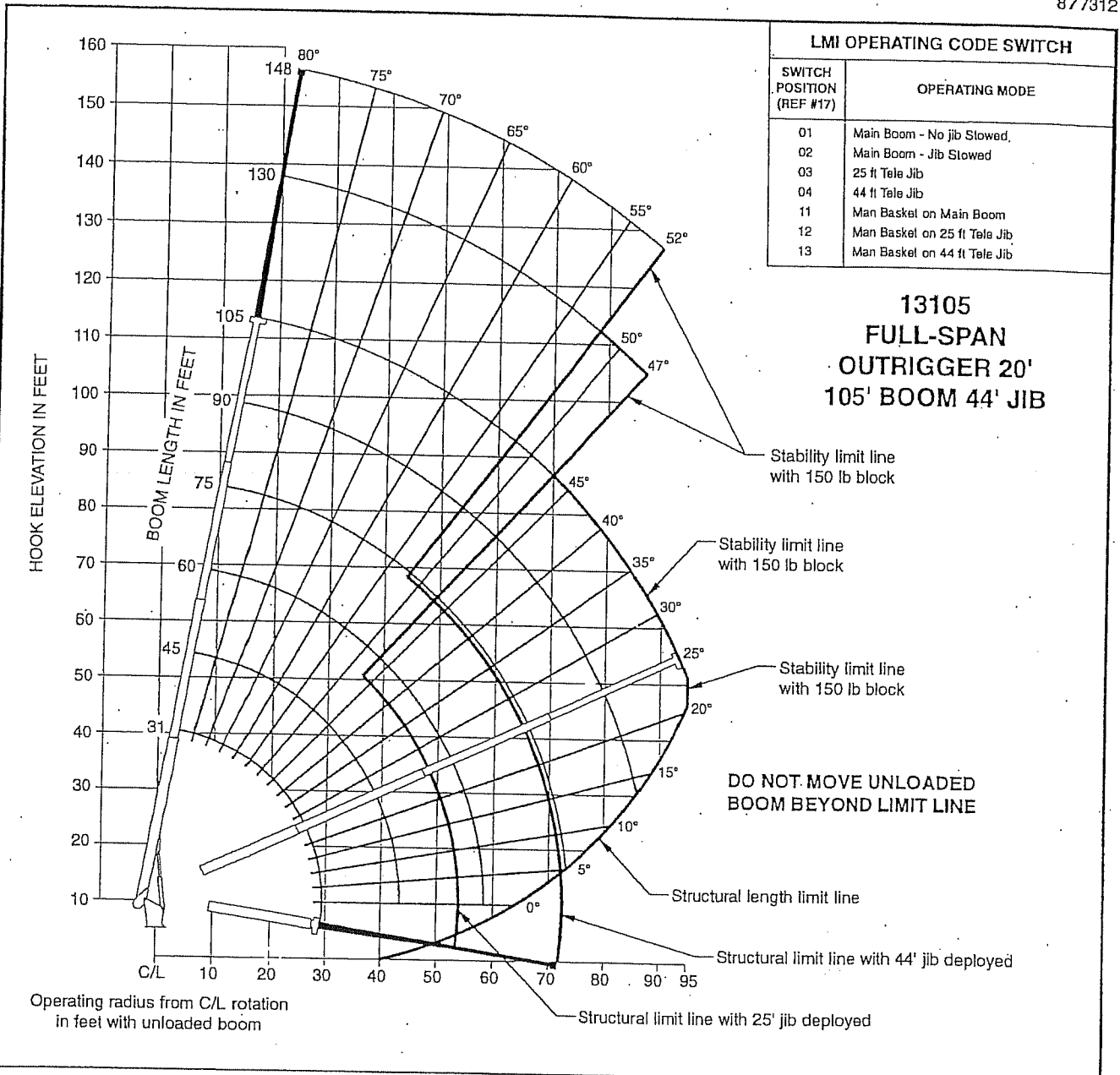


30 TON SWING CAB

877312



LMI OPERATING CODE SWITCH	
SWITCH POSITION (REF #17)	OPERATING MODE
01	Main Boom - No jib Stowed,
02	Main Boom - Jib Stowed
03	25 ft Tele Jib
04	44 ft Tele Jib
11	Man Basket on Main Boom
12	Man Basket on 25 ft Tele Jib
13	Man Basket on 44 ft Tele Jib

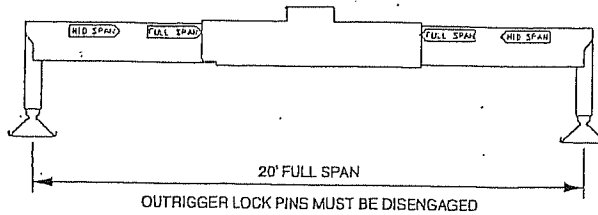
SET-UP

1. Fully extend and set outriggers to full-span location, level crane and set front stabilizer if equipped.

OPERATION

1. The 31 ft. boom length capacities are based on boom fully retracted. If not fully retracted, do not exceed 45 ft. boom length capacities.
2. Do not extend unloaded boom or jib beyond stability limit line on range chart as loss of stability may occur.
3. Load blocks and slings are considered to be a part of the load.
4. Operate with jib by radius when main boom is fully extended and by boom angle when main boom is partially extended. Do not exceed jib capacities at any partially extended boom length.
5. All jib loads must be lifted with single part reeving.

13105
105' BOOM
44' JIB



FULL-SPAN
OUTRIGGER

31 TO 105 FOOT BOOM RATED LOADS WITHOUT JIB

LOAD RADIUS (ft)	LOADED BOOM ANGLE	31 ft BOOM (lb)	LOADED BOOM ANGLE	45 ft BOOM (lb)	LOADED BOOM ANGLE	60 ft BOOM (lb)	LOADED BOOM ANGLE	75 ft BOOM (lb)	LOADED BOOM ANGLE	90 ft BOOM (lb)	LOADED BOOM ANGLE	105 ft BOOM (lb)
5	79.4	60,000										
8	73.1	38,400	79.3	30,000								
10	68.9	31,800	76.8	29,100								
12	64.6	27,300	74	24,800	78.8	22,300						
14	60.2	23,700	71.2	21,700	76.8	19,500	80	15,400				
16	55.6	21,000	68.4	19,200	74.8	17,800	78.5	15,000				
20	45.5	16,700	62.6	15,600	70.7	14,100	75.4	12,600	78.4	10,800	80.2	7,700
25	29.1	12,200	54.8	12,500	65.4	11,300	71.3	10,200	75.1	9,000	77.8	7,900
30			46.3	10,200	59.8	9,400	67.1	8,500	71.8	7,800	75	6,500
35			36.1	8,200	53.9	7,950	63.1	7,050	68.6	6,500	72.2	5,700
40			23.5	6,100	48	6,600	58.6	6,100	65	5,550	69.3	5,000
45					40.8	5,550	53.8	5,250	61.3	4,800	66.2	4,300
50					32.2	4,550	48.7	4,550	57.5	4,200	63.1	3,800
55					20.6	3,900	43	3,900	53.5	3,700	60	3,400
60							36.7	3,250	49.2	3,200	56.6	2,950
65							29.1	2,650	44.6	2,750	53.2	2,650
70							18.7	1,800	39.4	2,200	49.5	2,300
75									33.6	1,800	45.5	1,850
80									26.8	1,400	41.2	1,450
85									17.2	800	36.5	1,150
90											31.2	850
95											24.8	600
0		5,200	0	2,400	0	900						

25 TO 44 FOOT JIB RATED LOADS

LOAD RADIUS (ft)	LOADED BOOM ANGLE	25 ft JIB (lb)	LOADED BOOM ANGLE	44 ft JIB (lb)
30	78.3	14,200		
35	76.2	3,800	78.2	2,400
40	74	3,400	76.4	2,250
45	71.7	2,900	74.7	2,150
50	69.4	2,500	72.8	2,000
55	66.9	2,100	70.8	1,800
60	64.5	1,800	68.9	1,650
65	61.9	1,500	66.8	1,450
70	59.4	1,300	64.6	1,300
75	56.7	1,100	62.4	1,100
80	53.9	900	60	900
85	51	700	57.8	800
90	47.9	500	55.4	700
95			52.9	550

RATED LOAD REDUCTIONS WITH JIB

BOOM LENGTH	44' JIB STOWED
31'	Reduce load 850 lb
45'	Reduce load 600 lb
60'	Reduce load 450 lb
75'	Reduce load 350 lb
90'	Reduce load 300 lb
105'	Reduce load 250 lb

* See owners manual. Also the 60,000 lb load requires optional 9/16" diameter 6x25 IWRC cable.

Note:

1. All capacities are in pounds, angles in degrees, radius in feet.
2. Loaded boom angles are given as reference only.
3. Shaded areas are structurally limited capacities.
4. Handling of personnel is only permitted with full extension of all outrigger beams.