

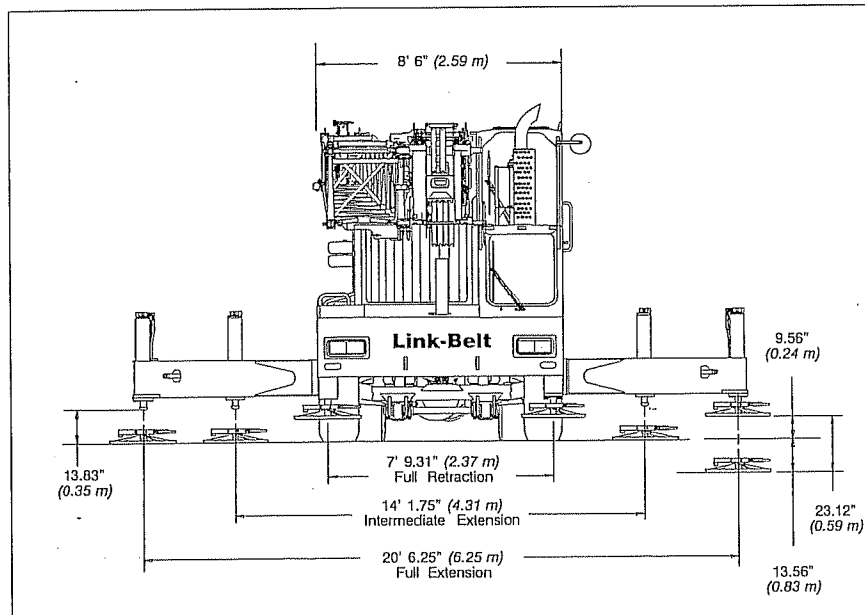
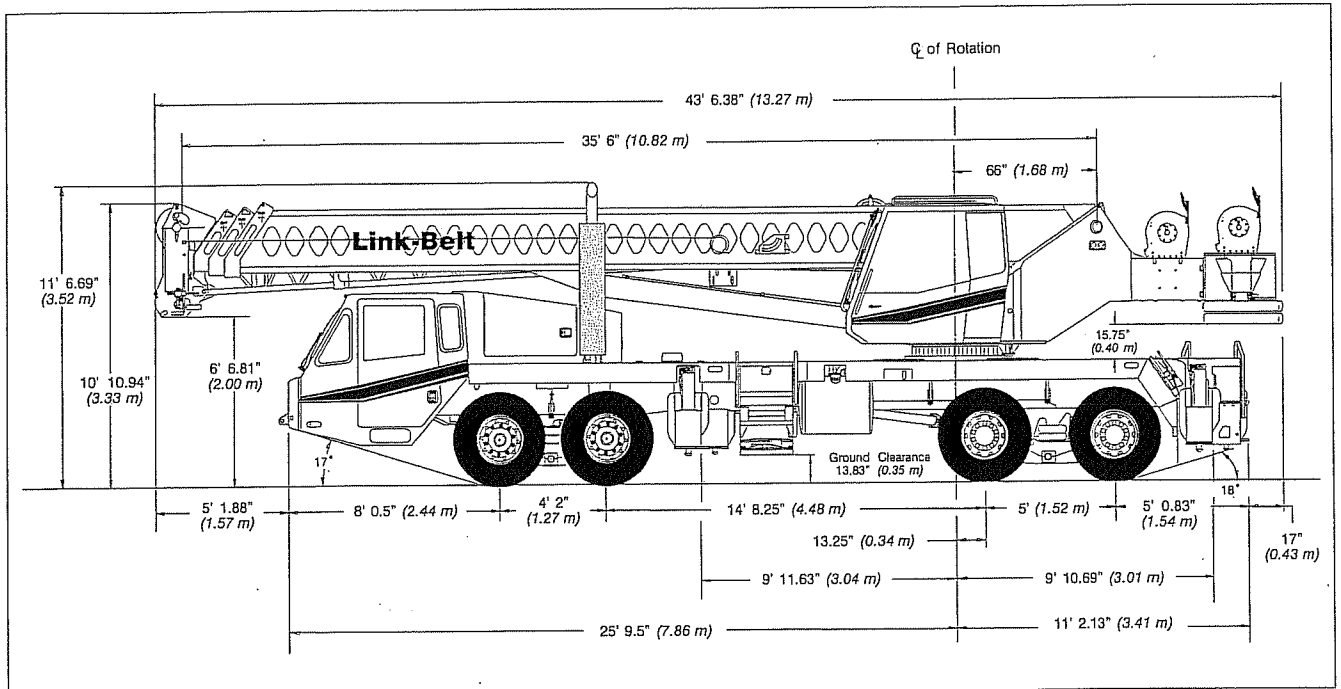
Specifications

Telescopic Boom Truck Crane

HTC-8650

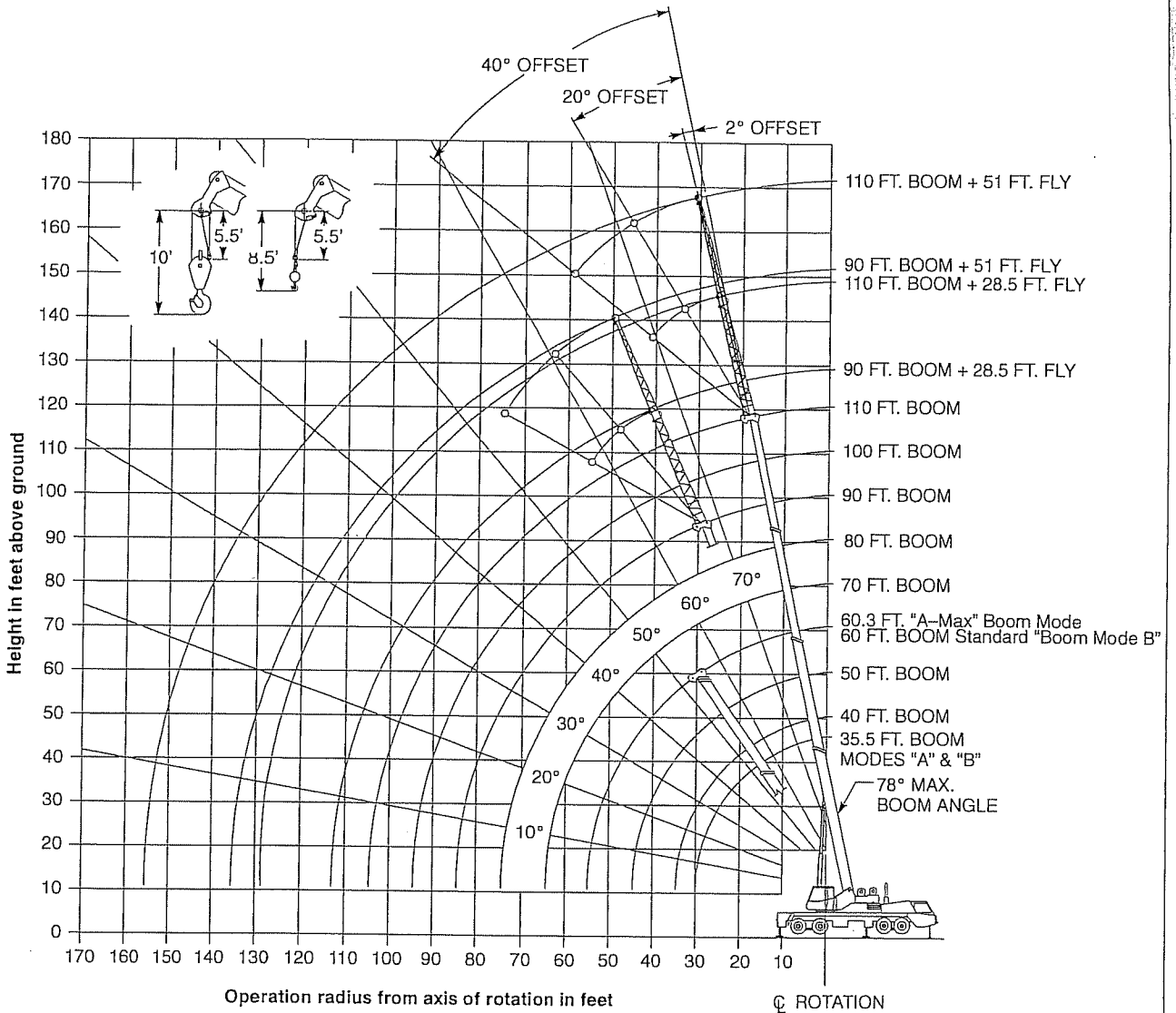
50-ton (45.36 metric tons)

Series II



Turning radius	ft-in	meters
Wall to wall over carrier	44' 1"	13.4
Wall to wall over boom	45' 6"	13.9
Wall to wall over boom attachment	46' 11"	14.3
Centerline of tire	38' 7"	11.8
Tail Swing		
With counterweight	12' 8.5"	3.9
Without counterweight	12' 5.25"	3.8

WORKING RANGE DIAGRAM

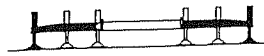


Note: Boom and fly geometry shown are for unloaded condition and crane standing level on firm supporting surface. Boom deflection, subsequent radius, and boom angle change must be accounted for when applying load to hook.

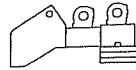
WARNING

Do Not Lower The Boom Below The Minimum Boom Angle For No Load Stability As Shown In The Lift Charts For The Boom Lengths Given. Loss Of Stability Will Occur Causing A Tipping Condition.

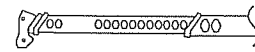
**Rated Lifting Capacities
In Pounds**



FULL OUTRIGGERS



15,100 # CTWT



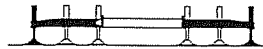
**MAIN BOOM
"A" (A-Max)**

Load Radius (Ft.)	35.5 Ft.			40 Ft.		
	∠°	360°	Over Rear	∠°	360°	Over Rear
10	68.0	100,000	100,000	70.5	80,900	80,900
12	64.5	76,000	76,000	67.5	73,200	73,200
15	58.5	65,800	65,800	62.5	63,600	63,600
20	48.0	53,400	53,400	54.0	52,000	52,000
25	34.5	41,900	41,900	44.0	41,700	41,700
30				31.0	32,200	33,400
Min.Bm. Ang./Cap.	0.0 (30.0)	17,800	17,800	0.0 (34.5)	15,400	15,400

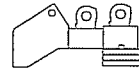
Load Radius (Ft.)	50 Ft.			60.3 Ft.		
	∠°	360°	Over Rear	∠°	360°	Over Rear
10	75.0	72,800	72,800			
12	72.5	65,800	65,800	76.5	50,900	50,900
15	69.0	57,700	57,700	73.5	47,300	47,300
20	62.5	47,500	47,500	68.5	39,300	39,300
25	55.5	40,300	40,300	63.0	33,500	33,500
30	48.0	31,800	33,100	57.5	28,800	28,800
35	39.0	23,700	27,100	51.0	23,400	25,300
40	27.5	18,300	22,600	44.0	18,100	22,400
45				36.0	14,300	18,700
50				26.0	11,500	15,300
Min.Bm. Ang./Cap.	0.0 (44.5)	10,100	10,100	0.0 (54.8)	6,600	6,600

() Reference Radius For Min. Boom Angle Capacities (Shown in Parenthesis) Are In Feet.

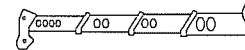
**Rated Lifting Capacities
In Pounds**



FULL OUTRIGGERS



15,100 # CTWT



**MAIN BOOM
"B" (Standard)**

Load Radius (Ft.)	35.5 Ft.			40 Ft.		
	∠°	360°	Over Rear	∠°	360°	Over Rear
10	68.0	100,000	100,000	70.5	37,900	37,900
12	64.5	76,000	76,000	67.5	37,900	37,900
15	58.5	65,800	65,800	62.5	37,900	37,900
20	48.0	53,400	53,400	54.0	37,900	37,900
25	34.5	41,900	41,900	44.0	37,900	37,900
30				31.0	32,900	33,900
Min.Bm. Ang./Cap.	0.0 (30.0)	17,800	17,800	0.0 (34.5)	14,700	14,700

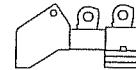
Load Radius (Ft.)	50 Ft.			60 Ft.		
	∠°	360°	Over Rear	∠°	360°	Over Rear
10	74.5	37,900	37,900	77.5	37,900	37,900
12	72.5	37,900	37,900	76.0	37,900	37,900
15	69.0	37,900	37,900	73.0	37,900	37,900
20	62.5	37,900	37,900	68.0	37,900	37,900
25	55.5	37,900	37,900	62.5	37,900	37,900
30	48.0	33,600	34,500	56.5	33,900	34,500
35	39.0	25,400	28,500	50.5	25,800	28,900
40	27.5	19,900	24,000	43.5	20,400	24,300
45				35.5	16,500	20,800
50				25.0	13,500	17,400
Min.Bm. Ang./Cap.	0.0 (44.5)	10,000	10,000	0.0 (54.5)	7,100	7,100

() Reference Radius For Min. Boom Angle Capacities (Shown in Parenthesis) Are In Feet.

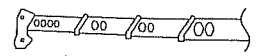
Rated Lifting Capacities In Pounds



FULL OUTRIGGERS



15,100 # CTWT



MAIN BOOM
"B" (Standard)

Load Radius (Ft.)	70 Ft.			80 Ft.		
	α°	360°	Over Rear	α°	360°	Over Rear
12	78.0*	37,900	37,900			
15	76.0	37,900	37,900	78.0*	35,400	35,400
20	72.0	37,900	37,900	74.5	34,700	34,700
25	67.5	37,900	37,900	71.0	34,300	34,300
30	62.5	32,900	32,900	67.0	30,400	30,400
35	57.5	25,900	29,000	63.0	26,100	27,300
40	52.5	20,600	24,600	58.5	20,700	24,500
45	46.5	16,700	21,100	54.0	16,800	21,200
50	40.5	13,800	17,700	49.0	13,900	17,800
55	33.0	11,500	15,000	44.0	11,700	15,200
60	23.5	9,700	12,800	38.0	9,900	13,000
65				31.0	8,400	11,300
70				22.0	7,100	9,800
Min.Bm. Ang./Cap.	0.0 (64.5)	5,000	5,000	0.0 (74.5)	3,600	3,600

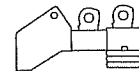
Load Radius (Ft.)	90 Ft.			100 Ft.		
	α°	360°	Over Rear	α°	360°	Over Rear
20	77.0	28,900	28,900			
25	74.0	28,300	28,300	76.0	24,000	24,000
30	70.5	24,900	24,900	73.0	22,600	22,600
35	67.0	22,100	22,100	70.0	20,100	20,100
40	63.5	19,800	19,800	67.0	18,000	18,000
45	59.5	16,900	17,900	63.5	16,200	16,200
50	55.5	14,000	16,200	60.0	14,100	14,500
55	51.0	11,800	14,700	56.5	11,800	13,200
60	46.5	10,000	13,100	52.5	10,100	12,100
65	41.5	8,600	11,400	48.5	8,600	11,200
70	36.0	7,300	9,900	44.5	7,400	10,000
75	29.5	6,200	8,700	39.5	6,300	8,800
80	21.0	5,300	7,600	34.5	5,400	7,700
85				28.5	4,600	6,800
90				20.5	4,000	6,000
Min.Bm. Ang./Cap.	0.0 (84.5)	2,500	2,500	0.0 (94.5)	1,600	1,600

Load Radius (Ft.)	110 Ft.		
	α°	360°	Over Rear
25	77.5	19,500	19,500
30	75.0	19,500	19,500
35	72.5	18,500	18,500
40	70.0	16,500	16,500
45	67.0	14,700	14,700
50	64.0	13,300	13,300
55	61.0	11,900	12,100
60	57.5	10,200	11,100
65	54.0	8,700	10,100
70	50.5	7,500	9,200
75	46.5	6,400	8,400
80	42.5	5,500	7,600
85	38.0	4,700	6,900
90	33.0	4,000	6,000
95	27.5	3,400	5,300
100	20.0	2,900	4,700
Min.Bm. Ang./Cap.	0.0 (104.5)	900	900

() Reference Radius For Min. Boom Angle Capacities (Shown In Parenthesis) Are In Feet.
* This Capacity Based On Maximum Obtainable Boom Angle.



FULL OUTRIGGERS



15,100 # CTWT

20° Offset
2° Offset

28.5' Offset Fly

90' Main Boom

20° Offset
2° Offset

51' Offset Fly

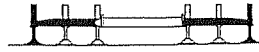
90' Main Boom

Load Radius (Ft.)	20° Offset		20° Offset		40° Offset	
	360°	∠°	360°	∠°	360°	∠°
30	16,900					
35	14,200					
40	13,500	75.5	10,600			
45	12,800	73.0	10,100	76.5	7,900	
50	12,100	70.5	9,700	73.5	7,700	
55	11,500	68.0	9,200	71.0	7,400	
60	10,700	65.0	8,800	68.0	7,200	
65	9,500	62.0	8,400	65.0	7,000	
70	8,300	59.0	8,000	62.0	6,900	
75	7,200	56.0	7,600	58.5	6,800	
80	6,300	52.0	6,700	55.0	6,700	
85	5,500	48.5	5,800	51.0	6,000	
90	4,800	44.0	5,100	46.0	5,200	
95	4,200	39.5	4,400	41.0	4,500	
100	3,600	34.5	3,800			
105	3,100	28.0	3,300			
110	2,700					
Min. Bm. Ang./Cap.	800	0.0	900	0.0	900	

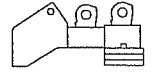
Load Radius (Ft.)	2° Offset		20° Offset		40° Offset	
	∠°	360°	∠°	360°	∠°	360°
35	78.0*	9,200				
40	76.0	8,600				
45	74.0	8,100				
50	72.0	7,600	78.0*	5,500		
55	70.0	7,000	75.5	5,200		
60	67.5	6,600	73.5	4,900		
65	65.5	6,100	71.0	4,700	77.0	3,700
70	63.0	5,800	69.0	4,400	74.5	3,600
75	61.0	5,400	66.5	4,200	72.0	3,500
80	58.5	5,100	64.0	4,100	69.5	3,400
85	56.0	4,800	61.5	3,900	66.5	3,300
90	53.0	4,600	59.0	3,800	63.5	3,200
95	50.5	4,300	56.0	3,600	60.5	3,200
100	47.5	4,100	53.0	3,500	57.5	3,100
105	44.5	3,700	50.0	3,400	54.0	3,100
110	41.0	3,300	46.5	3,300	50.0	3,100
115	37.0	2,900	43.0	3,200	45.5	3,100
120	33.0	2,500	38.5	2,800	40.0	2,800
125	28.0	2,200	33.0	2,400		
130	22.0	1,900	26.0	2,000		
135	11.0	1,300				
Min. Bm. Ang./Cap.	0.0	100	0.0	200	0.0	300

* This Capacity Based On Maximum Obtainable Boom Angle.

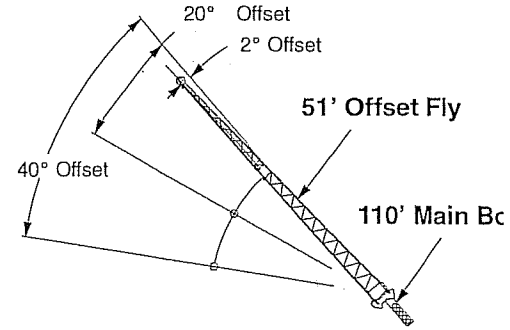
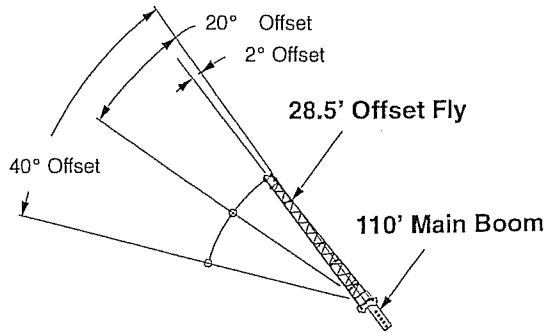
Rated Lifting Capacities In Pounds



FULL OUTRIGGERS



15,100 # CTWT



Load Radius (Ft.)	2° Offset		20° Offset		40° Offset	
	∠ °	360°	∠ °	360°	∠ °	360°
35	77.0	9,400				
40	75.5	9,400				
45	73.5	9,400	77.0	9,600		
50	71.5	9,400	75.0	9,200	78.0*	7,600
55	69.5	9,300	73.0	8,600	75.5	7,400
60	67.5	8,600	70.5	8,000	73.5	7,200
65	65.0	8,000	68.5	7,400	71.0	7,000
70	62.5	7,500	66.0	7,000	68.5	6,600
75	60.0	7,000	63.5	6,500	66.0	6,200
80	57.5	6,100	61.0	6,200	63.5	5,900
85	54.5	5,300	58.0	5,700	60.5	5,600
90	51.5	4,600	55.0	5,000	57.5	5,200
95	48.5	4,000	52.0	4,300	54.0	4,500
100	45.0	3,500	48.5	3,700	50.5	3,900
105	42.0	3,000	45.0	3,200	46.5	3,400
110	38.0	2,500	41.0	2,700	42.5	2,800
115	34.0	2,200	37.0	2,300		
120	29.5	1,800	32.0	1,900		
125	24.0	1,500	26.0	1,500		
130	16.0	1,200				



WARNING

Do Not Lower 28.5 Ft. Offset Fly In Working Position Below 11.5° Main Boom Angle Unless Main Boom Length Is 109 Ft. Or Less, Since Loss Of Stability Will Occur Causing A Tipping Condition.

Load Radius (Ft.)	2° Offset		20° Offset		40° Offset	
	∠ °	360°	∠ °	360°	∠ °	360°
45	77.0	6,200				
50	75.5	6,200				
55	74.0	6,200				
60	72.5	6,200	77.5	4,900		
65	70.5	6,100	75.5	4,700		
70	68.5	5,800	73.5	4,500		
75	66.5	5,400	71.5	4,300	76.5	3,500
80	64.5	5,000	70.0	4,200	74.5	3,400
85	62.5	4,700	68.0	4,000	72.5	3,300
90	60.5	4,400	65.5	3,900	70.0	3,300
95	58.5	4,100	63.5	3,700	68.0	3,200
100	56.0	3,900	61.5	3,600	65.5	3,200
105	53.5	3,400	59.0	3,400	63.0	3,100
110	51.0	3,000	56.5	3,300	60.5	3,100
115	48.0	2,600	54.0	3,000	57.5	3,000
120	45.5	2,200	50.5	2,600	54.5	2,800
125	42.5	1,900	47.5	2,200	51.0	2,400
130	39.0	1,600	44.0	1,900	47.0	2,000
135	35.5	1,300	40.5	1,600	42.5	1,700
140			36.5	1,300		



WARNING

Do Not Lower 51 Ft. Offset Fly In Working Position Below 34.0° Main Boom Angle Unless Main Boom Length Is 98 Ft. Or Less, Since Loss Of Stability Will Occur Causing A Tipping Condition.

*This Capacity Based On Maximum Obtainable Boom Angle.